





ROZAWOOD WORKSHOP

THE ROZAWOOD WORKSHOP IS THE VISION OF LUTHIER **ROMAN ZAJÍČEK**, WHO IS KNOWN AS ONE OF THE FINEST GUITAR MAKERS IN EUROPE.

MANY EUROPEAN PLAYERS AND GUITAR RETAILERS CONSIDER ROMAN TO BE AMONG THE "TOP 5" GUITAR MAKERS WORLDWIDE. HIS INSTRUMENTS ARE KNOWN FOR THEIR IMPRESSIVE TONE AND IMPECCABLE WORKMANSHIP.

ROMAN BEGAN BUILDING MUSICAL INSTRUMENTS IN 1979 AS A HOBBY AND A SECOND JOB. IN 2003, ROMAN FOUND A PARTNER TO FINANCE AND MANAGE HIS ONGOING ACTIVITIES AND THE NEW ROZAWOOD WORKSHOP WAS ESTABLISHED.

ROMAN IS PART OF THE IMPRESSIVE HISTORY OF BOHEMIAN INSTRUMENT MAKING WHICH IS CONSIDERED TO BE ONE OF THE OLDEST IN THE WORLD. HIS KNOWLEDGE OF TRADITIONAL VIOLIN CONSTRUCTION COMBINED WITH HIS TECHNICAL INSIGHT AND EXPERIENCE AS A GUITAR MAKER HAS MADE HIM ONE OF THE FINEST LUTHIERS IN EUROPE. OVER THE YEARS, HIS UNIQUE CONSTRUCTION METHODS HAVE RESULTED IN A WIDE RANGE OF FINE, HIGH-END ACOUSTIC INSTRUMENTS OF THE FINEST QUALITY AND IMPRESSIVE ACOUSTIC SOUND.

ROZAWOOD IS NOT A FACTORY OR A MANUFACTURING PLANT, BUT RATHER, AN ARTIST'S WORKSHOP WHERE ONLY SKILLED AND TRAINED LUTHIERS PUT THEIR BEST EFFORTS INTO EVERY UNIQUE ROZAWOOD INSTRUMENT.

ROMAN IS A PROUD MEMBER OF THE GUILD OF PRAGUE LUTHIERS.



ROZAWOOD INSTRUMENTS

WE PRODUCE SEVERAL KINDS OF INSTRUMENTS, ALL BUILT ONLY FROM SPECIALLY SELECTED SOLID TONEWOODS AND OTHER TOP QUALITY MATERIALS. EACH INSTRUMENT IS ENTIRELY HAND-MADE. EVEN TODAY, VERY RARE, HAND CUT PEARL INLAYS, AS WELL AS TAP-TUNING FOR EACH INSTRUMENT, ARE STANDARDS IN OUR WORKSHOP.

FLATTOP GUITARS ARE THE MAIN PART OF OUR PRODUCTION. MODERN AND INNOVATIVE CONSTRUCTION TECHNIQUES, INCLUDING UNIQUE OPTION POSSIBILITIES, TOGETHER WITH RESPECTED TRADITIONAL EXPERIENCES OF OLD LUTHIERS OFFER TO OUR CUSTOMERS A WIDE RANGE OF BODY SHAPES AND DESIGN VARIANTS.

SPECIALTY GUITARS INCLUDE A STILL RISING NUMBER OF NOT OFTEN USED, BUT INCREASINGLY MORE POPULAR INSTRUMENTS – TENOR GUITARS, TERZ GUITARS, BARITONE GUITARS, DROP GUITARS AND GUITAR BOUZOUKIES.

ARCHTOP GUITARS PRODUCED IN THREE DIFFERENT BODY SIZES AND **RESOPHONIC GUITARS** (BOTH SQUARENECK AND ROUNDNECK WITH ORIGINAL ARCHBACK OPTION) ARE THE NEXT INSTRUMENTS WE OFFER.

OCTAVE MANDOLINS AND **MANDOCELLOS**, THESE RARELY BUILT “MANDO-FAMILY” MEMBERS, PRESENT CARVED INSTRUMENTS IN OUR PRODUCTION.

ALL OUR INSTRUMENTS ARE PURELY ACOUSTIC, BUT MAY BE EQUIPPED WITH ANY TYPE OF PICKUP SYSTEM JUST FOR CUSTOMER’S DEMAND IF REQUESTED.



FLATTOP GUITARS

BASED ON OUR PREVIOUS YEARS OF EXPERIENCE, WE HAVE BEGUN TO USE THE SAME CONSTRUCTION TECHNIQUES ON ALL OF OUR FLATTOPS. CURRENTLY WE USE SPECIAL X - BRACING FOR TOPS AND COMBINATION OF CARBON BAR WITH ADJUSTABLE TRUSS ROD NECK REINFORCEMENT FOR ALL OUR GUITARS.

STANDARD MODELS ARE STILL AVAILABLE IN VARIANTS OF BOTH TRADITIONAL "WESTERN" DESIGNED GUITARS (BOHEMIAN, TWENTY-EIGHT AND WIZARD) AND CONTEMPORARY MODERN LOOK (WARTIMER, WOODSTOCK AND ARTCRAFT).



THE NEXT TWO MODELS REPRESENT OUR INNOVATIVE CONSTRUCTION OPTIONS – BELLISIMO WITH “DOUBLE-WOOD” TOP AND MASTERVOICE WITH THE SECOND SOUNDHOLE AND UNIQUE ROZAWOOD ACOUSTIC SPEAKER SYSTEM.

TO MAKE PLAYING OUR GUITARS MORE COMFORTABLE, WE OFFER A BEVEL FOR BIGGER BODY GUITARS AS AN OPTION.

CUSTOM DESIGN OR CONSTRUCTION OPTIONS ARE ALSO AVAILABLE UNDER SPECIAL REQUEST.



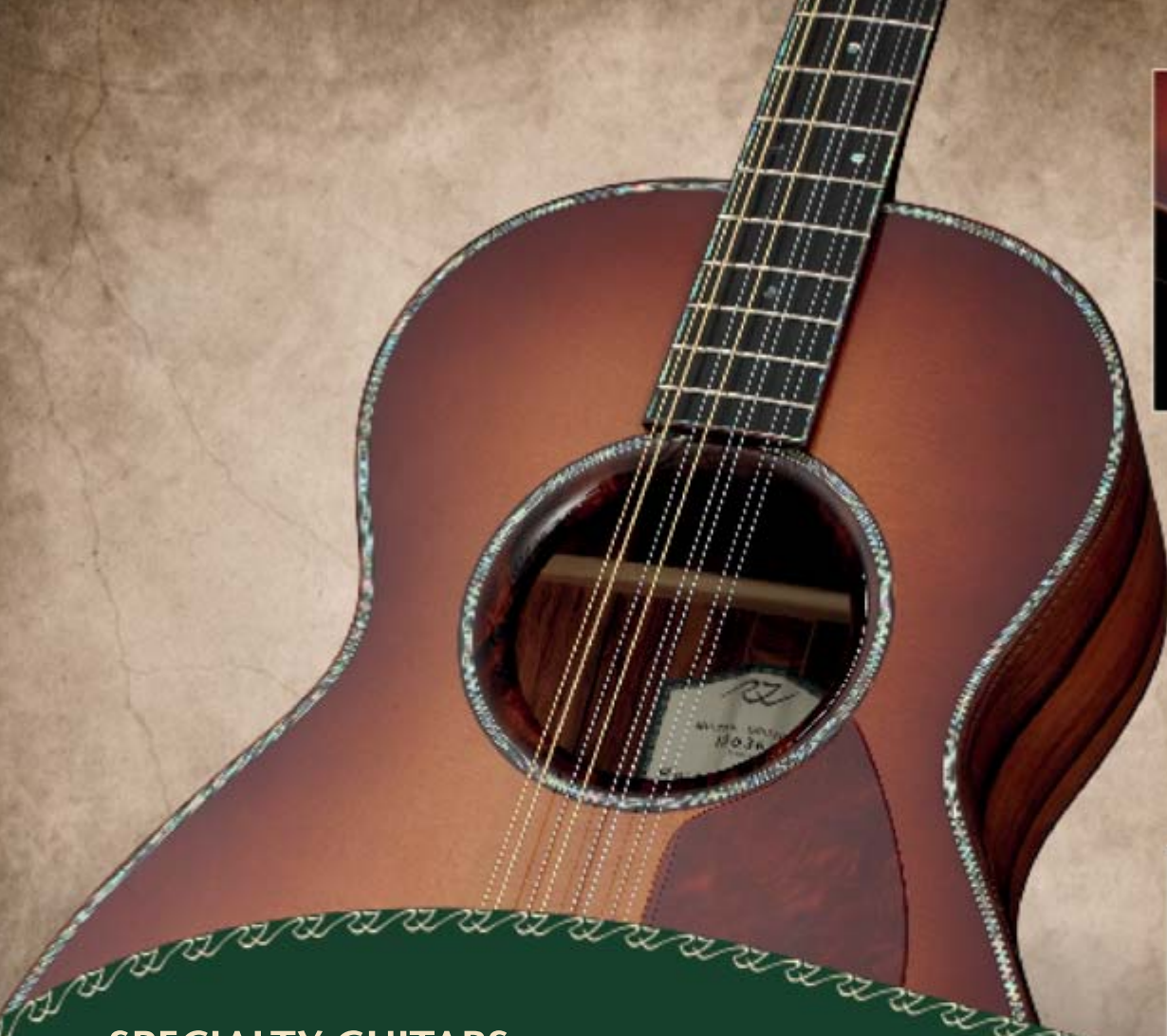
SOMETHING SPECIAL ...

ROZAWOOD ACOUSTIC SPEAKER SYSTEM IS OUR SOLUTION FOR GUITARS WITH A SECOND SOUNDHOLE. MAKING ANOTHER HOLE IN THE SIDES RESULTS IN LOSING THE ACOUSTIC PRESSURE INSIDE THE BODY WITH A FATAL IMPACT TO THE FRONT SOUND PROJECTION, ROMAN'S CONSTRUCTION OF THE CURVED CONVEX ROSETTE AND THE INSIDE WOODEN "SPEAKING-TUBE" ENSURES THAT THE FRONT PROJECTION WILL BE THE SAME AND PART OF THE SOUND WILL BE LED FROM THE SIDE TO THE PLAYER'S EARS.

WE CALL THE GUITARS WITH THIS UNIQUE SYSTEM DESIGN, **MASTERVEICE**.

"DOUBLE-WOOD" TOP IS OFFERED ON OUR **BELLISIMO** MODELS TO COMBINE A "ONE KIND OF WOOD" LOOK ON THE ENTIRE GUITAR WITH THE BEAUTY OF THE SPRUCE SOUNDBOARD SOUND. IT IS MADE POSSIBLE BY ROMAN'S ORIGINAL TOP CONSTRUCTION. THE "USUAL" SPRUCE TOP IS OVERLAID BY A VERY THIN PLATE OF SOLID WOOD – NOT VENEER (THE SAME KIND AS BACK AND SIDES) WITH THE SAME GRAIN DIRECTION. IT RESULTS IN A VERY UNIQUE SOUND WITH A GREAT CHOICE OF SOUND SPECTRUM – DEPENDING ON THE KIND OF WOOD USED FOR THE TOP OVERLAY AND BACK AND SIDES AS WELL.

WOODEN CONVEX ROSETTE WE OFFER AS AN OPTION FOR ALL OUR FLATTOPS. THIS WAS STARTED AS A CONSTRUCTION OPTION ON OUR **MASTERVEICE** MODELS AND WAS LATER USED SUCCESSFULLY ON OUR BARITONE GUITARS. ROMAN ADAPTED THIS SPECIAL DESIGN FOR USAGE ON ALL FLATTOPS. THIS ROSETTE IS MADE FROM A BLOCK OF SOLID WOOD TO THE SPECIAL SHAPE TO MINIMISE FEEDBACK AND TO IMPROVE BASS RESPONSE.



SPECIALTY GUITARS

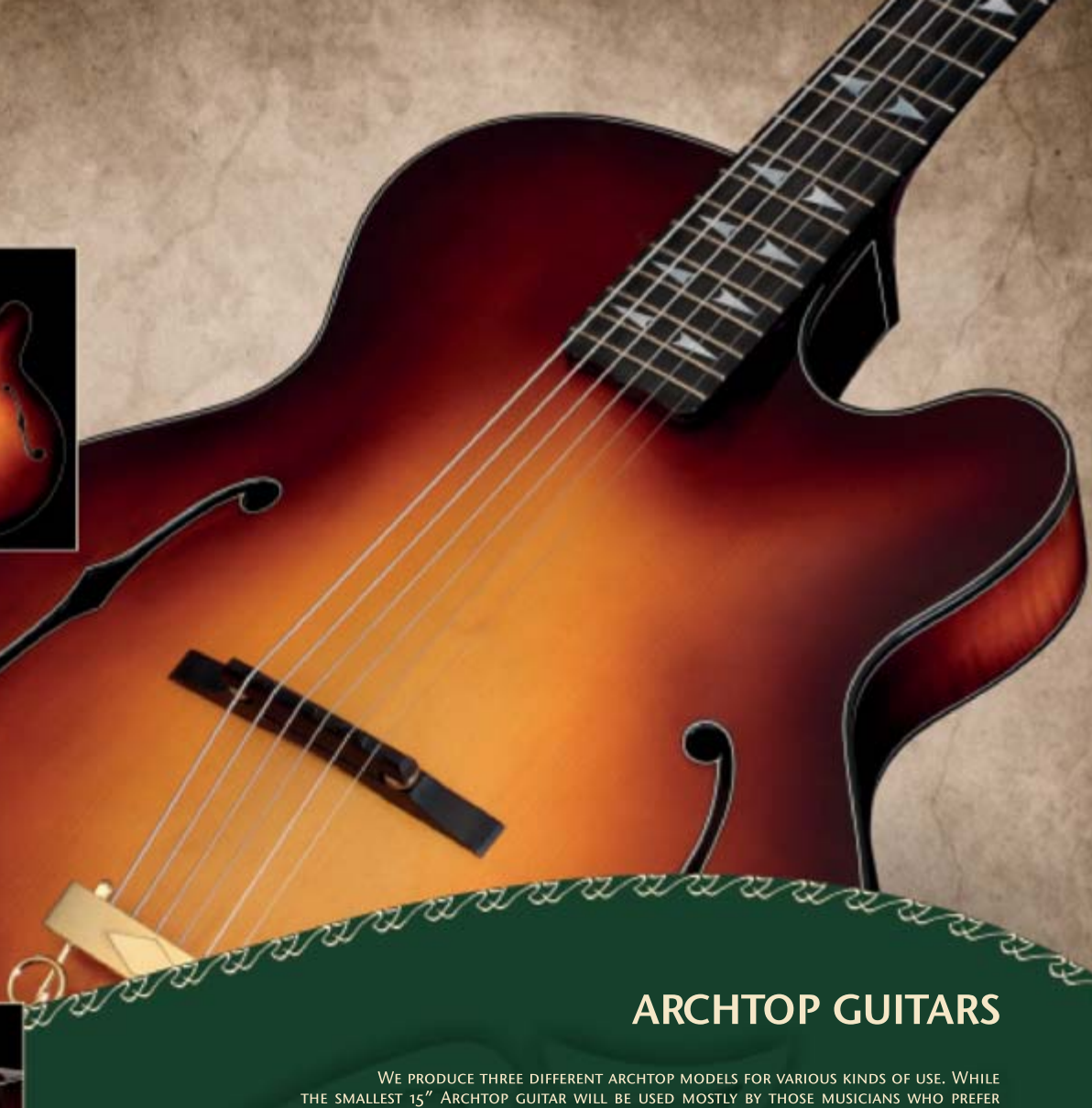
TENOR GUITAR IS A FOUR STRING INSTRUMENT USUALLY TUNED TO C, G, D, A - JUST EXACTLY LIKE A TENOR BANJO, AND CAN BE FOUND IN CONTEMPORARY FOLK AND POP MUSIC, AS WELL AS CELTIC AND OTHER ETHNIC STYLES.

TERZ GUITAR, TUNED A MINOR THIRD HIGHER THAN A REGULAR GUITAR - G, C, F, B \flat , D, G - PRODUCES A VERY CLEAR AND BRIGHT SOUND, WHICH CAN BE VERY RECOGNIZABLE AMONG OTHER GUITARS - PERFECT FOR CONTEMPORARY ACOUSTIC MUSIC BANDS.

OUR **BARITONE GUITAR** HAS A LONGER SCALE WITH A LONGER NECK, CONVEX WOODEN ROSETTE AND ADAPTED X - BRACING ESPECIALLY DEVELOPED AND DESIGNED FOR THIS INSTRUMENT WITH A LOW SOUND. OUR BARITONE GUITAR IS TUNED A PERFECT FIFTH BELOW - B, E, A, D, F \sharp , B - BUT OTHER TUNINGS CAN BE USED AS AN OPTION.

DROP GUITAR IS DEVELOPED FOR A LARGE NUMBER OF VARIOUS STYLES OF DROP OR OPEN TUNINGS (E.G. C, G, C, F, A, D OR D, D, A, F \sharp , A, D OR MANY OTHERS). THIS GUITAR HAS OUR DOUBLE X-BRACE TOP CONSTRUCTION AND CONVEX WOODEN ROSETTE AND WITH ITS FULL ROBUST AND DEEP SOUND IS A PERFECT CHOICE FOR MULTI-PURPOSE GUITAR PLAYERS.

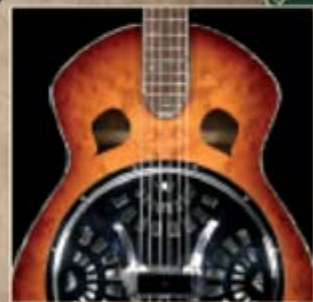
GUITAR BOUZOUKI, AN EIGHT STRINGED INSTRUMENT, IS A "COUSIN" TO OUR MANDO-FAMILY OF INSTRUMENTS, BUT BUILT AS A FLATTOP. THIS INSTRUMENT, TUNED AS AN IRISH BOUZOUKI - A, D, A, D - IS DESIGNED TO SOUND CLOSER TO A CLASSICAL IRISH INSTRUMENT BUT WITH A MORE POWERFUL AND COLOURFUL SOUND. THE CONSTRUCTION OF THIS VERY UNIQUE INSTRUMENT ALLOWS THE USE OF OCTAVE MANDOLIN TUNING AS WELL (G, D, A, E) - WITH PAIRED OR OCTAVE STRINGS ON G AND D. THIS TUNING CAN BE SUCCESSFULLY USED FOR MANY CELTIC AND AMERICAN FOLK STYLES.



ARCHTOP GUITARS

WE PRODUCE THREE DIFFERENT ARCHTOP MODELS FOR VARIOUS KINDS OF USE. WHILE THE SMALLEST 15" ARCHTOP GUITAR WILL BE USED MOSTLY BY THOSE MUSICIANS WHO PREFER THE OLD PRE-WAR STYLE L-5 GIBSON GUITARS, THE BIGGEST ONE OF 17" SIZE WILL BE MORE ACCEPTED BY GUITAR PLAYERS SEARCHING FOR THE GREAT, POWERFUL SOUND FOR SWING BANDS OR JAZZ BIG BANDS.

ALL SIZES ARE MADE FROM THE HIGHEST-GRADE SOLID SPRUCE USED FOR THE HAND CARVED TOPS AND FLAMED MAPLE FOR THE BACK AND SIDES. WE PRODUCE THESE INSTRUMENTS IN NATURAL GLOSS FINISH OR VARIOUS SHADES OF SUNBURST, WITH OR WITHOUT CUTAWAY.



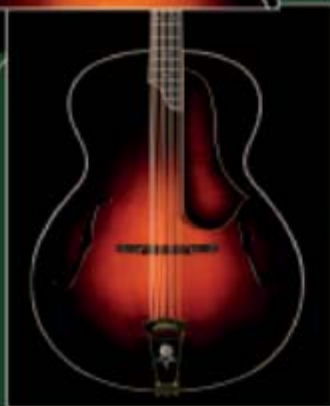
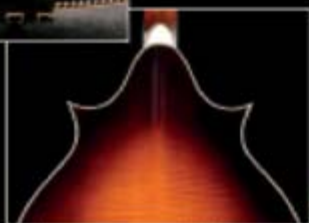
RESOPHONIC GUITARS

WE OFFER BOTH STANDARD TYPES OF RESONATORS – **ROUNDNECK** (POPULAR MOSTLY AMONG BLUES PLAYERS) AND **SQUARENECK** - WELL KNOWN IN THE MUSIC WORLD AS A “DOBRO”.

BUT WE OFFER EVEN MORE, BOTH OF THESE INSTRUMENTS ARE AVAILABLE IN TWO UNIQUE VARIANTS OF BACK DESIGN. OUR STANDARD VARIANT IS WITH A FLAT BACK - **CURVED IN THE UPPER BOUT** OF THE BODY. THE SECOND IS THE **ARCHBACK**—WITH A CARVED BACK SIMILAR TO TRADITIONAL CARVED INSTRUMENTS.

SO EACH RESOPHONIC GUITAR BUILT IN OUR WORKSHOP IS DEFINITELY ONE OF A KIND, UNLIKE ANY OTHER IN THE WHOLE WORLD.





OCTAVE MANDOLINS & MANDOCELLOS

WE BUILD THESE, ALMOST FORGOTTEN, TYPES OF INSTRUMENTS IN THREE DIFFERENT BODY SHAPES.

OUR TWO-POINT OCTAVE MANDOLIN, **OM-2**, WAS DESIGNED AS AN OCTAVE MANDOLIN WITH A SHORTER SCALE FOR CLASSICAL MANDOLIN FINGERING AND A VERY WARM AND LOUD TONE. THIS INSTRUMENT IS TUNED EITHER AS A CLASSIC OCTAVE MANDOLIN - GG, DD, AA, EE OR OCTAVE-DOUBLE STRINGS - Gg, Dd, Aa, Ee.

THE **MC-4** MANDOCELLO IS A CARVED INSTRUMENT WITH A SCROLL AND TWO POINTS, TUNED LIKE A VIOLONCELLO (CC, GG, DD, AA) AND SUITABLE FOR ALL MUSICIANS PLAYING ANYTHING FROM CLASSICAL MUSIC TO ETHNIC STYLES.

OUR **OM-4** IS THE SAME INSTRUMENT AS OUR **MC-4** WITH THE SAME BODY STYLE, BUT HAS A SLIGHTLY SHORTER SCALE AND A DIFFERENT TUNING.

THE MANDOCELLO **MC-5** IS OUR RE-CREATION OF THE ORIGINAL GIBSON K-5. IT HAS A SOLID TONE AND IT IS POSSIBLE TO USE IT FOR TRANSPOSITIONS OF CLASSICAL MUSIC OR FOR PLAYING IN MANDOLIN ORCHESTRAS.

OUR OCTAVE MANDOLIN **OM-5** (OUR **MC-5** WITH A SHORTER SCALE AND A DIFFERENT TUNING) IS THE PERFECT CHOICE FOR IRISH OR CELTIC MUSIC.



CUSTOM SHOP

SINCE ALL OF OUR PRODUCTS ARE COMPLETELY HAND-MADE, WE ARE ABLE TO SATISFY ALL OF OUR CUSTOMER'S DEMANDS. WHETHER YOU ORDER EXOTIC WOOD OR PEARL INLAYS, EXOTIC WOOD BINDING OR PURFLING, WE WILL BE SURE TO MAKE YOUR DESIGN THE MOST BEAUTIFUL POSSIBLE AND STILL HAVE THE VERY BEST SOUND OF ANY INSTRUMENT AVAILABLE TODAY, JUST TELL US WHAT YOU WANT.

WE WILL HELP YOU WITH YOUR CHOICES AND DISCUSS EACH OF YOUR REQUIREMENTS TO INSURE THAT WE CREATE AN INSTRUMENT THAT IS JUST LIKE YOU'VE DREAMED OF.



ROZAWOOD

HAND-MADE STRINGED INSTRUMENTS

ROZAWOOD, A.S.
HAVÍŘSKÁ 518
280 02 KOLÍN
CZECH REPUBLIC
INFO@ROZAWOOD.CZ

WWW.ROZAWOOD.CZ